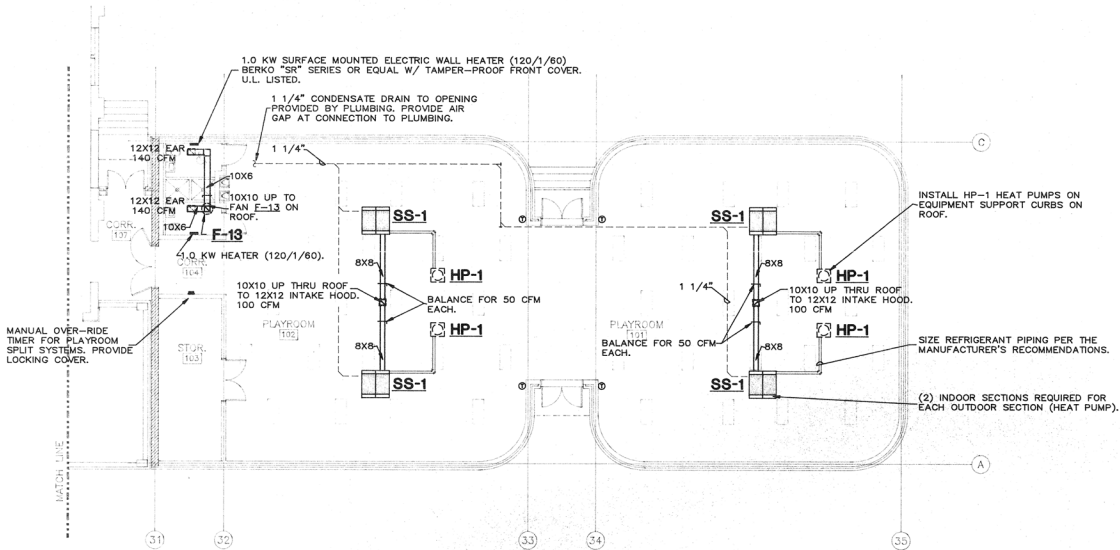


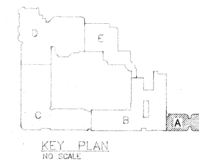
MECHANICAL SITE PLAN

1"=30'-0"



PARTIAL FLOOR PLAN-A HVAC

1/8" = 1'-0"



BARHAM SHAPPLEY, INC.

CONSULTING ENGINEERS
863 REDDOCK COVE
MEMPHIS, TENNESSEE 38119

GORDON ELEMENTARY SCHOOL RENOVATION AND ADDITION
MEMPHIS, TENNESSEE

PARTIAL FLOOR PLAN
HVAC

REVISIONS:	DATE	BY
1	OCTOBER 15, 1990	AS
2		ES
3		ES

COPYRIGHT 1990, THE CRUMP FIRM INC.

THE CRUMP FIRM, INC. ARCHITECTS-PLANNERS

61 MONROE BUILDING
MEMPHIS, TENNESSEE 38103
901-525-7744

PROJECT NO.
DATE

M9